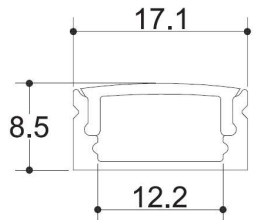


# Surface profiles



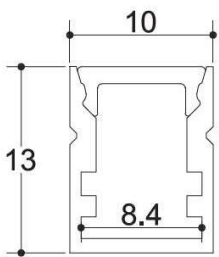
ALP002



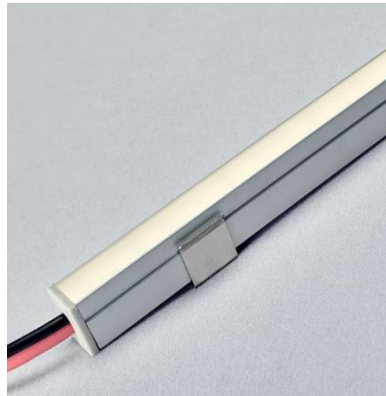
End cap with hole  
End cap without hole



Mounting clip



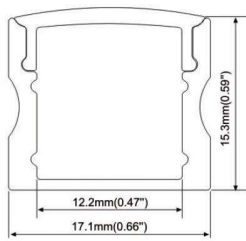
ALP035



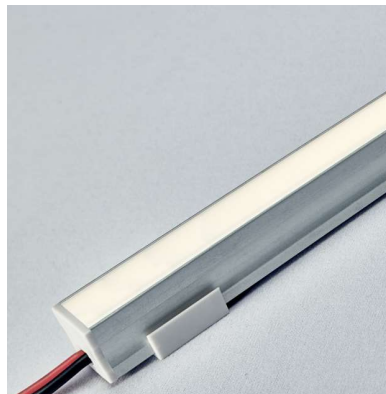
End cap with hole  
End cap without hole



Mounting clip



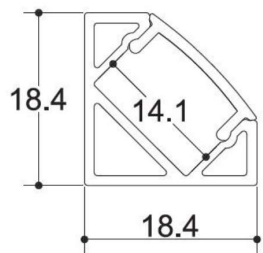
ALP004-R



End cap with hole  
End cap without hole



Mounting clip



ALP007-R

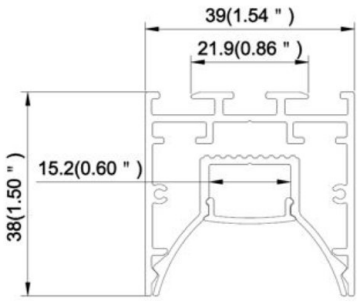


End cap with hole  
End cap without hole

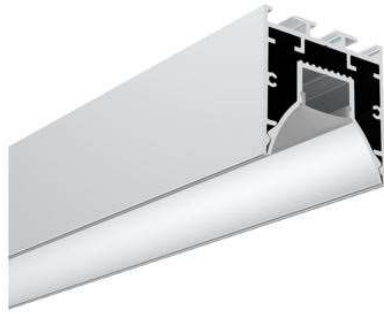


Mounting clip

# Surface profiles



ALP162



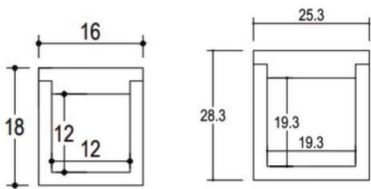
PC Diffused Cover



Prismatic cover



Lens 15°/30°/60°

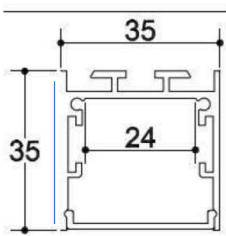


made to measure IP67 compatible

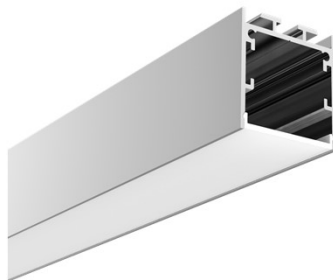


LEDlinear

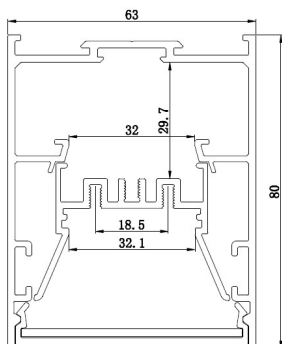
NOTE tig-weld ends, optional fixings



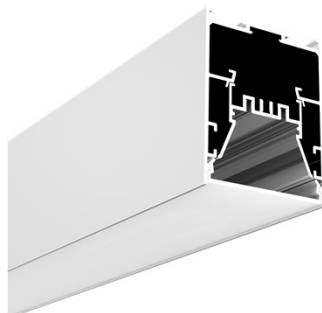
ALP018-R3



End caps



ALP6380



Die cast end caps

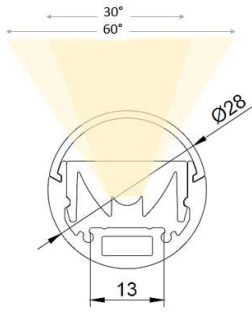


Inside clip



Safety wire

# Surface profiles



ALP142

