

WL3218

3W DC24V Constant Voltage Trimless Step Light

Description

Step Light for indoor use; Contemporary minimal glare free. Suitable for step-washing and general orientation lighting. DC24V Constant Voltage;



Finish
White
Black

Material
Aluminium



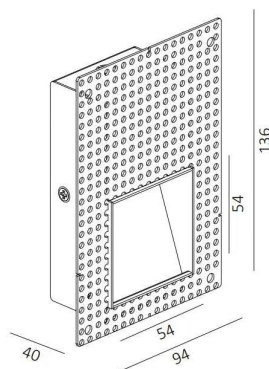
TECHNICAL CHARACTERISTICS

Light source

Light source: Osram 3030 Chip
Output (W): DC24V 3W
Total power consumption (W): 3W
Color temperature: 2700K/3000K
CRI: 93
Photobiological risk: RG1
Real Lumen: 180
Lm/Real W: 60
Life Time: 50.000h L90B20
MacAdam steps: 3
UGR: 19

GEAR available

[on/off](#),
[Mains dim](#),
[DALI](#),
[Casambi \(blue-tooth control of each fixture\)](#),



60*115mm
5-25mm

Instructions
p.2



Repair
WHY REPLACE?

- Repair key components
- Upgrade to latest spec. (all brands)
- Avoid embodied carbon
- Responsible recycling



WEEE: M0235AA

Plaster-in Wall Step Light Instruction Leaflet



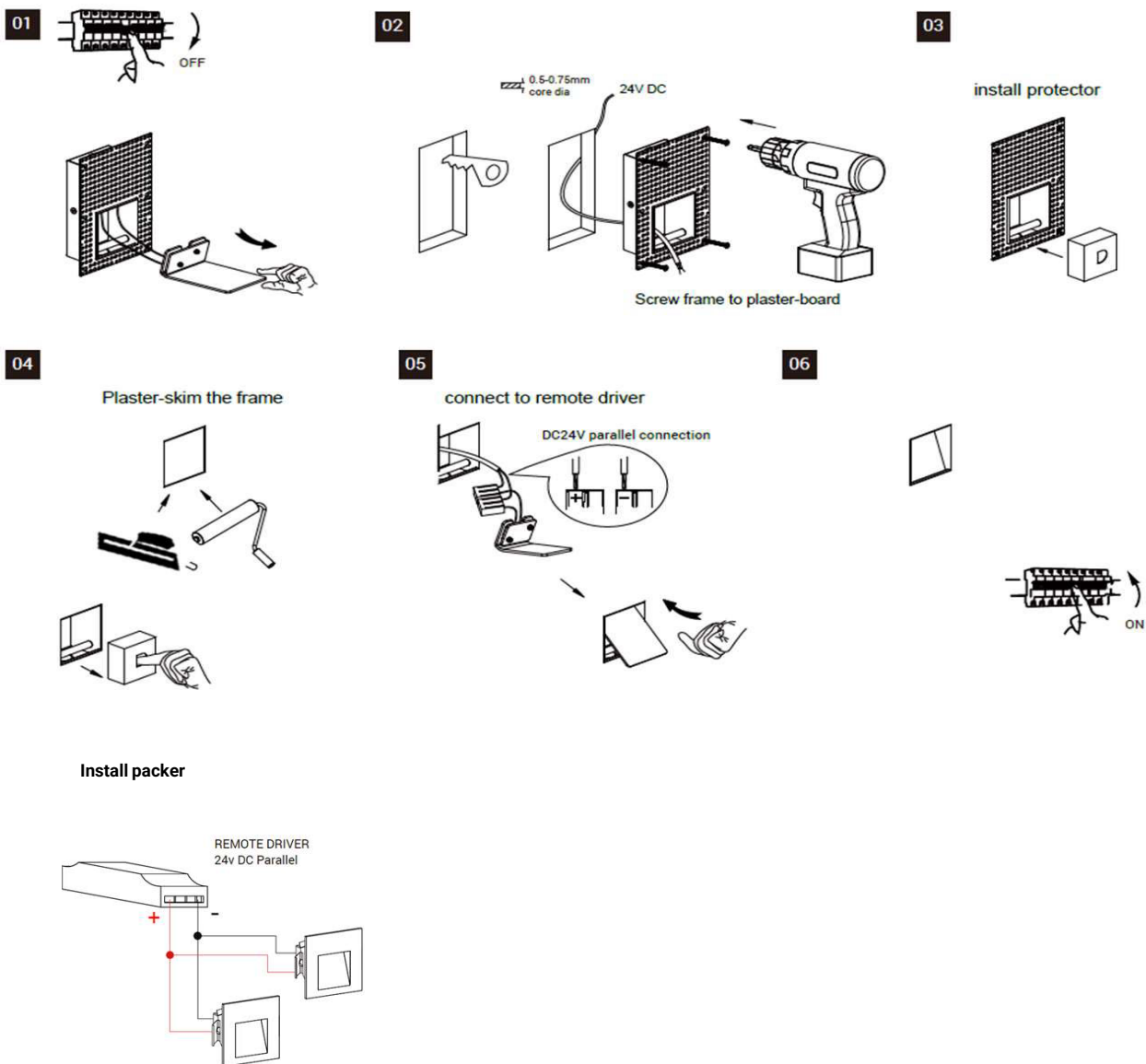
EN Read this instruction carefully before commencing installation and keep it for future reference.

Always switch off the mains before installation or maintenance.

Keep the product far from heat sources and in a Well-ventilated area.

The installation or maintenance should be carried out by a qualified electrician.

⚡ The light source contained in this luminaire shall only be replaced by the manufacturer or his service agent or a similar qualified person .



- Constant Voltage DC fittings must be wired in parallel.
- SET DRIVER TO CORRECT OUTPUT
- Use flex from driver to fitting